



**Interiorscapes, Inc.**  
Ground breaking plant design.

115-E Walter Davis Drive - Birmingham, AL 35209 - 205/942.7151

## RENTAL PRICE LIST

EFFECTIVE OCTOBER 2009

| <u>HEIGHT</u>                 | <u>SIZE</u> | <u>PLANT</u>                         | <u>PRICE</u>              |                                  |
|-------------------------------|-------------|--------------------------------------|---------------------------|----------------------------------|
|                               |             |                                      | <u>1<sup>st</sup> DAY</u> | <u>ADDITIONAL CHARGE PER DAY</u> |
| <b>STANDARD RENTAL PLANTS</b> |             |                                      |                           |                                  |
| 8-10 feet                     | 21"         | Magnolia Tree*                       | 100.00                    | +30.00                           |
| 14-17 feet                    | 17"         | Cocus Plumosa*                       | 80.00                     | +24.00                           |
| 12-14 feet                    | 14"         | Cocus Plumosa*                       | 60.00                     | +18.00                           |
| 8-10 feet                     | 17"         | Ficus Tree                           | 50.00                     | +15.00                           |
| 8-10 feet                     | 17"         | Ficus Tree with lights               | 70.00                     | +21.00                           |
| 6-7 feet                      | 14"         | Ficus Tree                           | 35.00                     | +10.50                           |
| 6-7 feet                      | 14"         | Ficus Tree with lights               | 55.00                     | +16.50                           |
| 6-8 feet                      | 14"         | Three ball Ficus Topiary             | 45.00                     | +13.50                           |
| 6-8 feet                      | 14"         | Three ball Ficus Topiary with lights | 65.00                     | +19.50                           |
| 4-5 feet                      | 14"         | Two ball Ficus Topiary               | 35.00                     | +10.50                           |
| 4-5 feet                      | 14"         | Two ball Ficus Topiary with lights   | 55.00                     | +16.50                           |
| 3-4 feet                      | 10"         | Two ball Ficus Topiary               | 25.00                     | +7.50                            |
| 3-4 feet                      | 10"         | Two ball Ficus Topiary with lights   | 45.00                     | +13.50                           |
| 8-10 feet                     | 17"         | Areca Palm                           | 50.00                     | +15.00                           |
| 6-7 feet                      | 14"         | Areca Palm                           | 35.00                     | +10.50                           |
| 5-6 feet                      | 12"         | Areca Palm                           | 30.00                     | +9.00                            |
| 3-4 feet                      | 10"         | Areca Palm                           | 20.00                     | +6.00                            |
|                               | 10"         | Assorted base plant                  | 20.00                     | 6.00                             |
|                               | 10"         | Boston Fern                          | 12.00                     | +3.60                            |
|                               | 10"         | Kimberly Queen Fern                  | 12.00                     | +3.60                            |
|                               | 6"          | Green base plant                     | 4.50                      | +1.35                            |
|                               | 6"          | Seasonal Blooming Plant              | 15.00                     | +4.50                            |
|                               | 6"          | Bromeliad                            | 10.00                     | +3.00                            |

\*These plants may require additional truck rental or handling fees due to size.

**POPULAR PLANT GROUPINGS**

|     |   |        |        |
|-----|---|--------|--------|
| 17" | Areca Palm or Ficus Tree, surrounded by assorted green underplants.                         | 125.00 | +37.50 |
| 14" | Areca Palm or Ficus Tree, surrounded by assorted green underplants.                         | 100.00 | +30.00 |
| 17" | Areca Palm or Ficus Tree, surrounded by bromeliads and mixed plants.                        | 155.00 | +46.50 |
| 14" | Areca Palm or Ficus Tree, surrounded by bromeliads and mixed plants.                        | 125.00 | +37.50 |
| 10" | Areca Palm surrounded by green plants in an urn (including pedestal.)                       | 75.00  | +22.50 |
| 10" | Areca Palm surrounded by seasonal blooming and green plants in an urn (including pedestal.) | 125.00 | +37.50 |

*Plant rental prices include a container choice of black matte plastic, white wicker, or brown rattan - also includes a Spanish moss top dressing.*

| <b>SIZE</b> | <b>DESCRIPTION</b> | <b>PRICE</b>              |                                  |
|-------------|--------------------|---------------------------|----------------------------------|
|             |                    | <u>1<sup>st</sup> DAY</u> | <u>ADDITIONAL CHARGE PER DAY</u> |

**DECORATIVE CONTAINERS**

|     |   |       |       |
|-----|---|-------|-------|
| 20" | Faux Concrete Container (for 17" plant)                   | 15.00 | +4.50 |
| 16" | Faux Concrete Container (for 14" plant)                   | 10.00 | +3.00 |
| 12" | Faux Concrete Container (for 10" plant)                   | 8.00  | +2.40 |
| 20" | Faux Terra Cotta Planter (for 17" plant)                  | 15.00 | +4.50 |
| 16" | Faux Terra Cotta Planter (for 14" plant)                  | 10.00 | +3.00 |
| 12" | Faux Terra Cotta Planter (for 10" plant)                  | 8.00  | +2.40 |
| 20" | Decorative Matte Black Container with Rim (for 17" plant) | 15.00 | +4.50 |
| 16" | Decorative Matte Black Container with Rim (for 14" plant) | 10.00 | +3.00 |
| 12" | Decorative Matte Black Container with Rim (for 10" plant) | 8.00  | +2.40 |
| 16" | White Wash Faux Stone (for 14" plants)                    | 10.00 | +3.00 |
| 14" | White Wash Faux Stone (for 10" plants)                    | 8.00  | +2.40 |
| 16" | Sage Green Olive Branch Relief (for 14" plants)           | 8.00  | +2.40 |

**URNS AND BASKETS**

|     |                                       |       |       |
|-----|---------------------------------------|-------|-------|
| 18" | Urn – White                           | 15.00 | +4.50 |
| 20" | Pedestal – White (to match above urn) | 10.00 | +3.00 |

**(URNS AND BASKETS CONT'D.)**

|          |  |       |        |
|----------|--|-------|--------|
| 18"      | Urn – Black  | 15.00 | +4.50  |
| 20"      | Pedestal – Black (to match above urn)  | 10.00 | +3.00  |
| 18"      | Urn – Tan  | 15.00 | +4.50  |
| 20"      | Pedestal – Tan (to match above urn)  | 10.00 | +3.00  |
| 12"      | Tabletop Urns - Gold – Assorted styles   | 15.00 | +4.50  |
| 50"      | Large Silver leaf Fiberglass Urn   | 75.00 | +22.50 |
| 20"      | French Wire Basket with Handle and coco liner<br>(holds 2 6" plants)                             | 10.00 | +3.00  |
| 24" tall | Black Wire Basket with coco liner  | 10.00 | +3.00  |
| 30" tall | Black Wire Basket with coco liner  | 12.00 | +3.60  |
| 36" tall | Black Wire Basket with coco liner<br><i>These baskets are approximately 12" wide at the top.</i> | 15.00 | +4.50  |
| 48" tall | Black Wire Basket with coco liner (30" wide at top)  | 50.00 | +15.00 |

**ARCHITECTURAL PROPS**

|          |   |        |        |
|----------|---|--------|--------|
| 7.5 feet | Roman Columns – faux stone (set of three) | 150.00 | +45.00 |
|          | Double Arch, Black Iron                   | 50.00  | +15.00 |
|          | Single Arch, Black Iron                   | 25.00  | +7.50  |
|          | Garden Gate, White                        | 50.00  | +15.00 |
|          | Garden Gate, Black                        | 50.00  | +15.00 |
|          | Rose Cherub Boy – Gloss White             | 35.00  | +10.50 |
|          | Park Bench – Metal and wood               | 35.00  | +10.50 |
| 72" tall | White Plastic Grecian Columns             | 18.00  | +5.40  |
| 40" tall | White Plastic Grecian Columns             | 16.00  | +4.80  |
| 32" tall | White Plastic Grecian Columns             | 14.00  | +4.20  |
| 24" tall | White Plastic Grecian Columns             | 12.00  | +3.60  |
|          | Pewter Metal Gazebo #1 regular roof       | 200.00 | +60.00 |
|          | Pewter Metal Gazebo #2 peaked roof        | 200.00 | +60.00 |
| 84"      | Pewter Metal Columns                      | 30.00  | +9.00  |
| 60"      | Pewter Metal Columns                      | 25.00  | +7.50  |
| 48"      | Pewter Metal Columns                      | 20.00  | +6.00  |
| 36"      | Pewter Metal Columns                      | 15.00  | +4.50  |

*All pewter metal columns have plexi-glass tops available at no extra charge.*

**(ARCHITECTURAL PROPS CONT'D.)**

|          |  |        |         |
|----------|--|--------|---------|
|          | Pergola – White Washed Wood  | 200.00 | +60.00  |
|          | Chuppah – White Metal with Black Wood Base   | 150.00 | +45.00  |
| 8x6 feet | Black Iron Arch  | 25.00  | +7.50   |
|          | Picket Fence   | 150.00 | +45.00  |
|          | <i>Fence is approximately 27.5 feet long, excluding gate which measures approximately 38in.</i>  |        |         |
|          | Large Rock Fountain  | 750.00 | +225.00 |
|          | <i>The fountain is comprised of 4 smaller fountains combined to fit the space at hand and can be set up against a wall or in the round. This price includes pumps, filler rocks, pebbles and labor. The addition of plants to surround the fountain is suggested. Fountain requires a power source, additional labor and supply charges may apply depending on location of power source. Smaller versions of this fountain are available for rental, please inquire for pricing information.</i> |        |         |

**CANDELABRAS AND VOTIVES**

|             |  |       |        |
|-------------|--|-------|--------|
| 4 foot tall | Sterling Silver Candelabra with Glass Hurricanes | 65.00 | +19.50 |
| 24"         | Pewter Tripod stand with vase                    | 15.00 | +4.50  |
|             | Pewter Unity Candleholder                        | 25.00 | +7.50  |
| 18"         | Pewter 7 Candle "A-frame" candle holder on stand | 15.00 | +4.50  |
|             | Seven Branch Candleholder (tabletop)             | 20.00 | +6.00  |
| 16"         | 3 Candle Spiral Votive Holder – Rust             | 15.00 | +4.50  |
| 29"         | 10 Candle Spiral Votive Holder – Rust            | 25.00 | +7.50  |
| 39"         | 12 Candle Spiral Votive Holder – Rust            | 30.00 | +9.00  |
| 16"         | 3 Candle Spiral Votive Holder – Pewter           | 15.00 | +4.50  |
| 18"         | 4 Candle Spiral Votive Holder – Pewter           | 20.00 | +6.00  |
| 39"         | 12 Candle Spiral Votive Holder – Pewter          | 30.00 | +9.00  |

*Votives will be supplied by Interiorscapes and are included in the rental price of votive holders. Other styles of candles (such as pillar or tapers) or specialty colors are available by special order only.*

**GLASS VASES**

*We have a wide variety of shapes, styles and sizes of glassware available for rental ranging from small bud vases to extra large buffet arrangement vases. Please call to inquire about styles and availability.*

## FLORAL

We will happily provide you with custom designed floral arrangements for your event. Table designs begin at \$45 per table. Larger bar and buffet arrangements are also available and will be quoted upon request. Vase rental is normally included in the cost of the arrangements, however the arrangement cost can be adjusted for the purchase of the vase. Our minimum order charge applies to floral design as well, however this total may include delivery and plant or prop rental.

## DELIVERY AND PICK UP

- -Labor is billed at \$50 per person per hour. Labor costs will be estimated on your proposal and will be adjusted accordingly after set up and take down occurs.
- -Locations with difficult access may be subject to additional labor charges.
- -Access to event space must be made available to Interiorscapes employees at the agreed upon delivery and pick up times. If employees of Interiorscapes must wait to gain access to a site or are asked to move plants from their pre-arranged location, additional labor charges will be applied at the rate of \$50 per person per hour.
- -Plant rentals exceeding the length of 3 days may require a visit by a maintenance technician to prune and water plants. Rental maintenance fees will be determined on a case by case basis as needed. Weekly plant rentals can be quoted on request and will include maintenance costs.
- -Damaged or lost items (includes both plants and props) are subject to a replacement fee.
- Additional charges may apply to: delivery outside of a 20 mile radius of Interiorscapes – after hour or weekend deliveries – large rentals requiring multiple employees, additional trucks, labor, etc.
- ***-There is a minimum order requirement of \$500. This price may include delivery and installation fees. Standard delivery and pick up fees begin at \$100.00.***

LOOKING FOR SOMETHING YOU DON'T SEE HERE? WE WILL BE HAPPY TO ORDER ANYTHING YOU NEED TO CUSTOMIZE THE LOOK OF YOUR EVENT. WE WOULD LIKE TO REQUEST THAT SPECIAL ORDERS BE PLACED TWO WEEKS IN ADVANCE TO INSURE AVAILABILITY AND AVOID EXTRA SHIPPING CHARGES.

### FOR BOOKING REQUESTS AND QUESTIONS PLEASE CONTACT:

Mariel Moore 205/288.4059 [mmoore@interiorscapesinc.com](mailto:mmoore@interiorscapesinc.com)

-or-

Dona Cash 205/288.3151 [donac@interiorscapesinc.com](mailto:donac@interiorscapesinc.com)

Please visit our website at [www.interiorscapesinc.com](http://www.interiorscapesinc.com)



Cocous Plumosa Palm



14" Ficus



17" Ficus



Three Ball Ficus



Two Ball Ficus



Areca Palm



Pothos



Janet Craig



Croton



Spath



Sansaveria

Sample Mixed Base Plants



Mum



Orchid

Sample Blooming Base Plants



Sample Bromeliads



Kimberly Queen Fern



Areca Palm with underplants



Ficus with underplants



Areca Palm in pedestal urn with orchids



Faux concrete planters



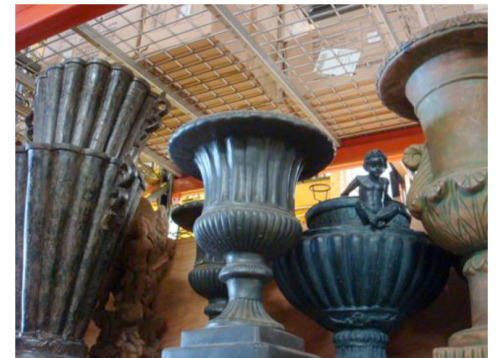
Faux terra cotta



Matte Black Container with lip



Pedestal Urns, available in black, white, and tan (pedestal shown above)



Assorted tabletop urns



French basket with handle  
(flowers available for an additional charge)



24", 30" and 36" tall  
wire basket



48" tall wire basket  
(flowers avail. for an addtl. charge)



Roman Columns - Set of Three  
(draping, plants and flowers available for an additional fee)



Iron Garden Gates



Cherub boy planter  
(flowers available for an additional fee)



Park benches - white rockers  
(black metal and wood also available.)



White Grecian columns



Pewter metal columns



Metal gazebo - pewter (flowers and garland available for and additional fee)



Large faux rock fountain



Sterling silver candelabra with glass hurricanes (flowers available for an additional fee)



Pewter 7 candle "A-frame" candle holder (for table top or stand)



Seven candle table top holder



3-4-10-12 spiral votive holders (rust and pewter)